



BLOCK 8 - WEST ELEVATION TO STATION STREET



BLOCK 8 - SOUTH ELEVATION TO RAILWAY LANE NORTH

- © This drawing is copyright.
- 1 Do not scale this drawing.
- 2 Errors and omissions to be immediately notified to Architect.
- 3 All dimensions to be checked on site.
- 4 To be read with relevant Engineers drawings.

Notes:

All dimensions in millimetres

External Finishes:  
External Wall Finish:  
Selected brick finish with aluminium cills, trims and caps. Contrasting brick as indicated.

Profiled Metal cladding locally at penthouse level as indicated on elevations.

Roofs:  
Selected flat roof membrane or extensive green roof system as indicated on drawings.

Podium landscape as per RMDA Landscape Architect's drawings.

Selected paving to penthouse terrace areas.

Roof guarding to be flat plate simple design behind parapet.

Windows/Doors:  
Colour coated aluminium window/door systems to selected RAL colour. Painted timber doors at own-door ground floor apartments.

Pre-finished metal doors/ timber gates to service rooms and car park entrance.

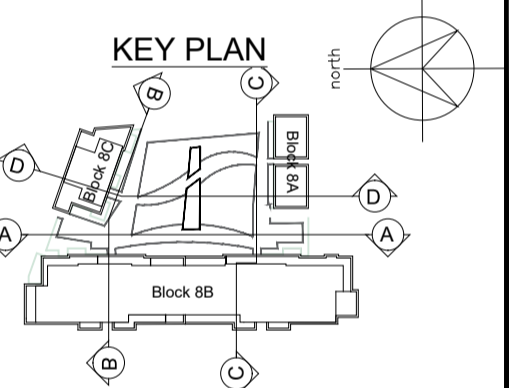
Glazed 1.8m high wind screens as indicated.

Opaque glazing to communal stair core windows which overlook existing or future adjacent developments.

External:  
Metal/Glass guarding at balconies and podium edges. Opaque glass privacy screen to adjacent balconies.

Painted metal railing at ground floor terraces. Soft and Hard landscape as shown on landscape architect's drawings.

Rainwater goods:  
uPVC or aluminium downpipes.



revisions date ins

|             |                                       |                                  |
|-------------|---------------------------------------|----------------------------------|
| description | Block 8<br>West & South<br>Elevations | drawing no.<br><b>1831 P 200</b> |
|             |                                       | field ref.: 118184/2/000/Block 8 |
| job         | Block 8,<br>Clongriffin,<br>Dublin 13 | revn.<br><b>P</b>                |
| scale       | 1:200 A1                              | date<br>JUL '19                  |
| drawn       | MG                                    | checked<br>MC                    |

client  
**Gerard Gannon Properties**

issue  
**Clongriffin SHD 1  
Planning**

**CONROY CROWE KELLY  
ARCHITECTS**

**65 MERRION SQUARE  
DUBLIN 2**

PHONE 66139901 FAX 6765715  
E-MAIL info@cck.ie